



red tailed hawks news

25030 Via Santee, Murrieta, CA 92563 • 951-696-1404

Principal: Tammy Hunter-Wethers • Assistant Principal: Lynn Nord



Principal Wethers' Message:



Dear Rail Ranch Families,

The Red-Tailed Hawk Newsletter (aka "family bulletin") will be emailed home monthly around the first week of each month we are in school. This bulletin is always available for viewing online on the Rail Ranch Website. It contains important information regarding the school calendar, student safety, and school reminders. If you change your email address, let us know right away! We will also email out important notices throughout the year. We will never give or sell your email address to anyone. Communication is key to ensuring a successful school year for all. We encourage parents to read the bulletins and classroom newsletters, check the website regularly, and read the marquee in front of the school each week. Major announcements will also be made via our Parent Square Communication email/voice-mail system. The weekly message goes out every Sunday evening at 4:30 pm and 4:50 pm. Our system will call every home and/or email and leave the same message. Please make sure that we have your most recent phone number/email address and encourage family members to take a message when they receive a message from the school.

Thank you to parents, staff, and students for the extra effort to make this work. All of you are amazing.

It is such a privilege to have you here at Rail Ranch!

Mrs. Wethers

PATRIOT DAY

we will never forget



Wear red/white and Blue on Friday, 9/9.



Happy
LABOR DAY

NO SCHOOL MONDAY, 9/5

SCHOOL PICTURE DAY



MONDAY,
SEPTEMBER 19TH
BE SURE TO WEAR
YOUR BEST SMILE!

ATTENTION 3RD, 4TH AND 5TH GRADERS:

Dance Team Tryouts are this month!

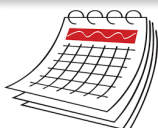
Practices- 9/12-9/14 (after school) Tryouts- 9/15 (after school)

See flyer for more information!

MUST FILL OUT APPLICATION TO TRYOUT!

Resource Links:

Community
Flyers



Rail Ranch
School Year
Calendar

Parent/Student
Handbook



Rail Ranch
Website

Lunch Menu



**WEDNESDAYS ARE EARLY
RELEASE DAYS**

K am 8:15-11:35
K pm 10:15-1:35
1st-3rd 8:15-1:35



Hawk Happenings



SEPTEMBER

Friday, 9/2-

- Reflections Begins
- Last day to join Band (5th graders)

Monday, 9/5- LABOR DAY HOLIDAY-NO SCHOOL

Wednesday, 9/7- EARLY OUT DAY

Friday, 9/9- WEAR RED/WHITE AND BLUE!! (For Patriot Day)

Monday, 9/12- Grandparents Day Lunch

Lunch Times: Includes Recess

AM Kinder- 10-10:30

PM Kinder- 1:05-1:35

1st- 11-11:40

2nd- 11:20-12:00

3rd- 12:20-1:00

4th- 12:40-1:20

5th- 1-1:40

9/12-9/14- DANCE TEAM TRYOUT PRACTICES AFTERSCHOOL (MPR)

9/15- DANCE TEAM TRYOUTS AFTERSCHOOL (MPR)

Wednesday, 9/14- EARLY OUT DAY

Monday, 9/19- PICTURE DAY!!

Wednesday, 9/21- EARLY OUT DAY

Wednesday, 9/28- EARLY OUT DAY

School Site Council Members Needed!

Parents we need you! Please see flier attached for information and to apply!

Drop-off

7:50- 8:10 am for grades 1-5. Morning K begins promptly at 8:15 am, Afternoon K begins promptly at 10:55am.

Pick-up

2:30 pm for grades 1-5. Afternoon K is 2:30 pm. Please see the student handbook for Minimum and Early Release (Wednesday) Day schedules.

No staff is available to watch students before 7:50 am and after 2:45 pm.

Students must be picked up before 2:45 pm. (Please see the student handbook for Minimum and Early Release (Wednesdays) Day schedules.) Early drop off or late pick-up may result in the police being called so that the student is safe. Supervision is not available for siblings of students in before and after-school programs.



Grandparents Day Lunch

Monday, Sept 12

(see above for lunch times)

PTA REFLECTIONS

SHOW YOUR VOICE!!

Entries due by Oct. 4
See attached flyer for info

RAIL RANCH SPIRIT WEAR

SHOW YOUR SCHOOL SPIRIT!

To purchase click the link:

<https://1stplacespiritwear.com/partner/11455>



SAFETY FIRST



Safety in the Loop

Please do not leave your vehicle unattended in the loops. A huge thank you to everyone who follows the rules and helps to keep our students safe.

4TH & 5TH STUDENT INVOLVEMENT OPPORTUNITIES

BOTH APPLICATIONS DUE SEPTEMBER 9!



ASB

5th graders are invited to apply for ASB which is our student leadership group on campus. For more information or an application, see Mrs. Rucker or Mrs. Vergara.

We will be accepting a few 4th grade ASB interns as well.



STUDENT VALET



4th and 5th graders can also apply for Student Valet to assist with morning arrival by opening car doors, greeting students, and ensuring safety. Student valet members only help in the mornings, not afternoons. Students can get an application and learn more from Mrs. Vergara or Mrs. Nord.

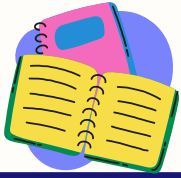
RAIL RANCH ELEMENTARY DANCE TEAM TRYOUTS!!



Hi Rail Ranch 3rd, 4th, and 5th grade students! We would like to invite you to come try out for the Dance Team! You will need to upload a 15 second video of you doing a freestyle dance to the form below using your 956 number logins.

Click the link below for more information!!

[Dance Team Flyer](#)



Library News



Library will be open to students and classes starting September 12th



Welcome to the Rail Ranch Library

Please check the schedule to see when your child visits the library.

There are no fines for overdue books but please encourage your child to return his/her book each week. No student can check out another book if they didn't return their book. Sometimes accidents happen. If a library book is lost or damaged while checked out to your child, the book must be paid for or replaced.

Please help me reinforce the good habits they have learned at home:

- How to handle books carefully;
- How to keep books in a safe place;
- How to return books to the library on time.



I am looking forward to a great year and many wonderful stories.

Happy Reading!

Mrs. Harris



**Rail Ranch Elementary School
School Site Council**

Nominations for Parent Member
2022-2023 through 2023-2024 Term

September, 2022

The Rail Ranch Elementary School Site Council (SSC) has two **parent** vacancies that need to be filled at this time. The purpose of this letter is to secure nominations for this open position and get some background information for our ballot. Our bylaws indicate that each term is two years. However, if you are really interested in getting involved with SSC and only have one year left at Rail Ranch (for example, your child is a 5th grader now), this can work as long as we have parents of younger school age children that can commit to a 2 year term. In other words, we have the flexibility to stagger the commitments over 1, 2 and 3 years if that will encourage more parents to get involved with SSC. ☺

What is the SSC? School Site Council is a parent and staff advisory committee comprised of parents and staff members. This council reviews and updates Rail Ranch’s Single Plan for Student Achievement, School Safety Plan, and Parent Involvement Policy, to name a few. All SSC decisions are made jointly with input from Rail Ranch staff, including our Leadership Team.

What are the duties of the SSC members? The SSC meets approximately once per month to review budgets and assessment data as they relate to our School Plan for Student Achievement, School Safety Plan, English Learner (EL) programs, Intervention programs, Enrichment programs, and Core Instruction programs.

This year, all of our meetings will be virtual through Microsoft Teams.

Please fill out the bottom part of this letter and return it to the front office by September 16, 2022 . A ballot will be sent out on September 19th, due by September 23rd . (please print form)

Current SSC members

Mr. Angel Castaneda

New member needed

New member needed

Sincerely,

Tammy Hunter-Wethers, Principal
Thunter-wethers@murrieta.k12.ca.us

Your name _____ Your Child’s name _____

Child’s current grade (circle): K 1 2 3 4 5

Please Print

Please Print

Signature _____ Phone Number _____

I would like the following information about me placed on the ballot. (3-5 sentences describing yourself)

Let's Celebrate
GRANDPARENT'S
DAY

COME SPEND LUNCH TIME
WITH YOUR "GRAND" STUDENT

MONDAY SEPTEMBER 12TH, 2022

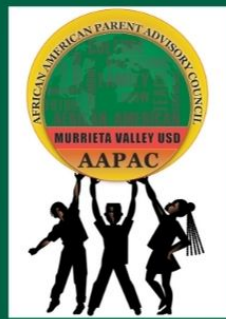
BRING YOUR ID
AND
YOUR LUNCH

LOOK FOR THE
CHECK-IN TABLE IN
THE BREEZEWAY

OTHER SPECIAL
GROWN UPS ARE
WELCOME TO
ATTEND IF
GRANDPARENTS
ARE NOT
AVAILABLE

LUNCH SCHEDULES

Kinder AM	10:00 - 10:30
Kinder PM	1:05 - 1:35
1st	11:00 - 11:20
2nd	11:20 - 11:40
3rd	12:20 - 12:40
4th	12:40 - 1:00
5th	1:00 - 1:20



African-American Parent Advisory Council

A.A.P.A.C.

The mission of the African American Parent Advisory Council is to support the academic and social-emotional growth of African-American students.

MURRIETA VALLEY USD

41870 McAlby Ct., Murrieta, CA 92562

All parents and community stakeholders are welcome.

MEETING DATES:

Tuesday, Sept. 27, 2022

Wednesday, Nov. 30, 2022

Tuesday, Feb. 7, 2023

Wednesday, May 3, 2023

TIME:

6:00 p.m. – 8:00 p.m.

HYBRID MEETINGS:

In-person @ DSC & virtually on Teams)

CONTACT:

Raquel Anthony

ranthony@murrieta.k12.ca.us

Marguerite Rucker

mrucker@murrieta.k12.ca.us



WEBSITE:

<https://www.murrieta.k12.ca.us/aapac>





RAIL RANCH PTA

BRINGS ART TO LIFE THROUGH

REFLECTIONS!!

ENTRIES DUE DIGITALLY BY OCT 4, 2022

[Click Here For Digital Entry Form](#)

(Students MUST use THEIR 956-email address/password to upload their Reflections project. Contact your child's teacher if you need your Child's email address. Questions/Help: mrucker@murrieta.k12.ca.)



Rail Ranch's PTA is sponsoring the Reflections program again this year! All student artists in grades PreK-5th grade are invited to participate! This year the theme is *Show Your Voice*.

The national PTA Reflections program has been supporting the arts for 50+ years as an arts recognition program so ALL students can participate and be recognized for their interpretation of the theme. Rail Ranch PTA has sponsored/funded the Reflections program for 25+ years. This is an EXCELLENT way to allow your child to express THEIR CREATIVITY!

HOW DO STUDENTS PARTICIPATE?

1. The student picks a category (below) to create THEIR interpretation of the theme *Show Your Voice*. There is no right or wrong interpretation. It is only based on what the student feels the theme means to them. Of course, parents/guardians can support their thinking, but this should be a student-generated idea and reflective of the student's age and abilities.
2. After the student picks their category (below), they will create a project that should reflect the theme Show Your Voice.
 - a. For example, using the Visual Arts category the student could draw a picture of what the theme means to them.
 - b. For the Dance category the student could choreograph a dance and have it recorded based on the theme.
 - c. For the movie and photography category, students must hold the camera and take the pictures (parents/guardians should not hold the camera).
 - d. There are guidelines/rules such as size limits, length of writing, video sizes/durations. Please review the rules guidelines before creating.
3. Completed Reflections projects must be submitted digitally using the form above. **Students MUST use THEIR 956-email address/password to upload their Reflections**

project. Contact your child's teacher if you need your child's email address. Questions: mrucker@murrieta.k12.ca.us)

4. After submitting projects digitally, students can bring their projects to school to share beginning Oct. 10th for the **PTA Reflections Celebration Reception on Oct. 26th at 6 pm in the multipurpose room**. Teachers may have different turn-in dates for projects. Invites/RSVP will only be sent to students that submit a digital entry (above)
5. At the reception we will acknowledge all students that turn in a entry digitally.
 - a. We will also have elect entries from each category/age division to represent Rail Ranch at a school district Reflections program.
 - b. As Reflections, is a national program project entries can advance to the national level (see examples below of previous projects that advanced)
 - c. Please review rules/guidelines below as we are only able to advance projects to represent Rail Ranch Elem. that follow the rules/guidelines.

Pick a category and use the theme: ***SHOW YOUR VOICE*** to unleash your creativity. Categories are:

1. Visual Arts
 2. Photography
 3. Literature/Writing
 4. Film Production
 5. Musical Composition.
 6. Dance Choreography
- If you need inspiration/ideas, **click here: [2021 PTA Reflections Winners](#)**
 - Entries must be original works of art!
 - Please review rules/guidelines here (below): <https://capta.org/programs-events/reflections/>
 - **Entries Due by Tues. Oct. 4, 2022, DIGITALLY ONLY!**
 - Click Here to Submit entries: <https://forms.office.com/r/ZQzZSaUQ1q>
 - Students must use their Office 365 email address that starts with 956#mvusd.org and password MvusdMMDD!(note M is capitalized and MM is 2-digit birth month and DD is 2-digit day of birth)
 - Your child's teacher can share your child's Office 365 email address/956#
 - **Questions or help needed: mrucker@murrieta.k12.ca.us**

SEE BELOW FOR OFFICIAL RULES/GUIDELINES AND PREVIOUS NATIONAL REFLECTIONS STUDENT ENTRIES!

OFFICIAL RULES/GUIDELINES:

Dance Choreography

Solo and ensemble works of all dance styles are accepted. Entrant must be the choreographer and may also be the performer, or one of the performers. If background music is used, cite it on the entry form. **Video file must not exceed 5 minutes** in length and 1,000 MB (1,000 megabyte) in file size and be in MP4 or AVI format.

Film Production

Accepted short film styles include: Animation, narrative, documentary, experimental or media presentation. Use of PowerPoint is prohibited. Entrant must be the screenwriter, cinematographer, editor and producer. If background music is used, cite it on the entry form. **Video file must not exceed 5 minutes** in length and 1,000 MB (1,000 megabyte) in file size and be in MP4 or AVI format.

Literature

Accepted forms of fiction and nonfiction include: Prose, poetry, reflective essay, screen play and play script, narrative, and short story. Entrants may write in their primary language as long as an interpretive English translation is also attached. Use of copyrighted material is prohibited. **Writing must not exceed 2,000 words** and may be handwritten or typed. Accepted formats: Single-sided print on 8 ½x11" paper, PDF file.

Music Composition

All music styles and combinations of instrumentation are accepted. Entrant must be the composer and may also be the performer, or one of the performers. Use of copyrighted material is prohibited. **Audio recording must not exceed 5 minutes** in length and 1,000 MB (1,000 megabyte) in file size. Accepted audio file formats include: MP3 and WAV. Notation (score/tablature) in PDF format is only required for middle and high school divisions.

Photography

Photo must be a single print/digital image. Collages and collections of photos are not accepted. Entrant must be the photographer and may use a variety of digital editing techniques including but not limited to, multiple exposure, negative sandwich and photogram. Use of copyrighted material is prohibited. **Print image dimensions must be no smaller than 3x5 inches and no larger than 8x10 inches.** Accepted print formats: Mounted on mat or poster board no larger than 11x14 inches. Framed prints are not accepted. **Digital image dimensions must be at least 640x960 (pixels) and 300 dpi (resolution).** Accepted file formats: JPEG, JPG, and PNG.

Visual Arts

Works of both fine and design arts are accepted, including but not limited to: architectural drawing and models, ceramics, collage, computer generated images and graphics, crafts, drawing, fashion clothes and jewelry, fiber work, mixed media, painting, printmaking and sculpture. Use of copyrighted material is prohibited. **2D artworks must be mounted on sturdy material and no larger than 24x30 inches with matting.** Framed entries are not accepted. Include one digital image of artwork with your submission. **3D artwork submissions must contain 3 digital images of artwork at different angles.** Image(s) are used for artwork identification, judging and exhibition purposes. Accepted file formats: JPEG, JPG, and PNG.

Special Artist


Students who identify as having a disability and may receive services under IDEA or ADA: Section 504 may enter in the Special Artist Division **OR** grade division most closely aligned to their functional abilities. **See Official Rules for details.**

Official Rules

By submitting an artwork to the "National PTA Reflections Program," entrants accept and agree to be bound by the official rules for participation as well as the entry requirements for their specific arts category and division. Additional state program requirements may apply. Any violation of these rules may, at PTA's discretion, result in disqualification. All decisions of the reviewers regarding this program are final and binding in all respects. (The "PTA" referred to in these rules include all PTAs reviewing the submission).

- 1. ELIGIBILITY.** Students must participate through a local PTA/PTSA. Each student's eligibility is determined by the state and local PTA/PTSA. A student may develop an entry inside or outside of school.
- 2. ARTS CATEGORIES.** There are six arts categories—dance choreography, film production, literature, music composition, photography and visual arts. Students may enter the National PTA Reflections Program in one or more arts categories. See each arts category rules for additional entry requirements.
- 3. GRADE DIVISIONS.** Students may enter in the appropriate division for their grade (Primary: Preschool-Grade 2; Intermediate: Grades 3-5; Middle School: Grades 6-8; High School: Grades 9-12; Special Artist: All grades welcome). The Special Artist Division welcomes students from all grades and abilities and offers non-artistic accommodations (e.g. adaptive technology; transcribing; holding a camera) for students to participate fully in PTA Reflections. Assistants must refrain from being involved in the artistic process (e.g. developing an artist statement, choreography, music lyrics, storyboards, etc.) Student recognition and awards are announced as part of the Special Artist Division.
- 4. HOW TO ENTER.** Entrants must submit their artwork and student entry form to their local PTA/PTSA program according to local and state PTA procedures. Entrants must follow requirements and instructions specific to each arts category and division. Contact local PTA programs for deadlines and additional information.
- 5. ENTRY REQUIREMENTS.** (All participants must also follow arts category and if applicable, Special Artist Division rules)
 - Only new pieces of artwork inspired by the current year's theme may be submitted.
 - Each entry must be the original work of one student only. An adult may not alter the creative integrity of a student's work. Because the program is designed to encourage and recognize each student's individual creativity, help from an adult or collaboration with other students is not allowed except in the Special Artist Division. Other individuals may appear in or perform a student's work, but the work itself must be the creative product of one student only. Only one student may be recognized as the award recipient for each entry. See the specific arts category rules and special artist division rules for details.
 - Each entry must contain a title and all entries must include an artist statement. The artist statement communicates what inspired the work, how it relates to the theme, and the content of the work. The statement must include at least 10 words and not exceed 100 words.
 - Use of copyrighted material is prohibited, except for background music in dance choreography and film production entries. If used in dance choreography and film production entries, background music must be cited on the entry form. Plagiarized entries will be disqualified. Use of PowerPoint templates are prohibited.
- 6. FINALIST SELECTION AND NOTIFICATION.** Entries are reviewed at local, regional, state and national levels. Each PTA determines its own reviewers for the program. Entries will be reviewed primarily on how well the student uses their artistic vision to portray the theme, their originality and creativity. The National PTA Reflections® program makes no restrictions on content or subject matter in artwork submitted by the local, regional or state levels. National PTA reserves the right to use its sole discretion in selecting the submissions to be recognized at the national level. Under no condition may parents or students contact a reviewer to dispute the status/score of any

VIDEO INFORMATION ABOUT REFLECTIONS:

 The logo for Arts Awards, featuring the words "Arts Awards" in white, bold, sans-serif font on a teal rectangular background.	<p>2020-2021 Reflections Call for Entries</p> <p>Get inspired by the new PTA Reflections theme and learn more about our national art program at PTA.org/Reflections ----- ... youtu.be</p>
--	--

<https://youtu.be/QPPxECsQ3ys>

 A video thumbnail showing a collage of colorful, abstract art pieces. Overlaid text reads "What is the National PTA's Art Reflections Program?".	<p>2020 21 PTA ART REFLECTIONS</p> <p>and share it all with friends, family, and the world on YouTube. youtu.be</p>
--	--

PTA Reflections 50th Anniversary (6 minutes)

<https://youtu.be/R6kx-a2HpWs>

2019-2020 Outstanding Interpretation of The Theme Video (30+minutes)

https://youtu.be/370Bio_8iIo

WOULD YOU LIKE TO PICK THE NEXT REFLECTIONS THEME?

Each year the national PTA Reflections program theme is picked by a student. The 2024-2025 theme search has officially opened!

California State PTA will submit five student-created themes to National PTA for review and consideration.

Scan or mail the Theme Search Entry Form or submit the digital form and remember that student submissions are due Nov. 1, 2022, by 11:59 PM PST. Students can submit a suggestion for next year by [clicking here](#).

DAILY STUDENT HOME SYMPTOM SCREENING

Symptoms reflect CDC guidelines as of July 2022

Families: This Symptom Check **is strongly recommended to be** completed every morning. If your student(s) is unvaccinated and answers 'YES' to any of the symptoms below, keep your student at home. This is a critical step in keeping our school community healthy.

SECTION 1-SCREENING QUESTIONS FOR UNVACCINATED STUDENTS

1. Has your student been exposed to anyone who has tested positive to COVID-19 within the last 14 days? YES NO
2. Is your student or anyone in the household currently under quarantine due to COVID-19? YES NO

SECTION 2-SCREENING QUESTIONS FOR VACCINATED STUDENTS

1. Has your student been exposed to anyone who has tested positive to COVID-19 within the last 14 days and are currently symptomatic? YES NO

SECTION 3-SCREENING QUESTIONS FOR ALL STUDENTS

Individuals with COVID-19 have had a wide range of symptoms reported – ranging from mild symptoms to severe illness. Symptoms may appear 2-14 days after exposure to the virus.

In the last 24 hours, has your student had any of these symptoms, not related to a pre-existing condition that has been medically documented?

** indicates a symptom that is high risk or highly suggestive of COVID-19.*

- | | | |
|---|------------------------------|-----------------------------|
| *Fever of 100.4 or higher (Temp should be taken daily) | <input type="checkbox"/> YES | <input type="checkbox"/> NO |
| *Cough | <input type="checkbox"/> YES | <input type="checkbox"/> NO |
| *Shortness of breath or difficulty breathing | <input type="checkbox"/> YES | <input type="checkbox"/> NO |
| *New loss of taste or smell | <input type="checkbox"/> YES | <input type="checkbox"/> NO |
| Headache | <input type="checkbox"/> YES | <input type="checkbox"/> NO |
| Sore Throat | <input type="checkbox"/> YES | <input type="checkbox"/> NO |
| Fatigue | <input type="checkbox"/> YES | <input type="checkbox"/> NO |
| Muscle or Body Aches | <input type="checkbox"/> YES | <input type="checkbox"/> NO |
| Nausea/vomiting | <input type="checkbox"/> YES | <input type="checkbox"/> NO |
| Diarrhea | <input type="checkbox"/> YES | <input type="checkbox"/> NO |
| Congestion or Runny Nose | <input type="checkbox"/> YES | <input type="checkbox"/> NO |

Students answering 'YES' to any of the above questions in section 3, or unvaccinated students who have been exposed to someone with COVID-19, MUST STAY HOME! Please call the school office to report your student's absence.

*Form for home use only, do not submit a copy to your student's school site.



September Lunch Menu ~ K - 5th



Daily Produce Bar

Harvest of the Month



Celery Sticks

- Apples
- Oranges
- Bananas
- Watermelon or Grapes
- Chilled Pears or Chilled Peaches
- Applesauce
- Local Strawberries
- Romaine Lettuce
- Baby Carrots
- Corn or Kidney Beans
- Green Beans or Cucumbers

* Selections vary seasonally and daily



MONDAY	TUESDAY	WEDNESDAY	THURSDAY	FRIDAY
<p>Breakfast Combos & Lunch Combos are free of charge (1 breakfast and 1 lunch per student per day) for the 2022-2023 School Year Second Lunch \$2.75</p>				
5 HAPPY LABOR DAY No School	6 Corn Dog	7 Chicken Nuggets & Crackers	8 Meatballs w/marinara & Texas Toast Brunch for Lunch	9 Cheesy Pizza Cookie Day
12 Bean & Cheese Burrito	13 Cheesy Garlic Toast w/marinara	14 Teriyaki Chicken Bowl w/ brown rice	15 Chicken Drumstick & Texas Toast	16 Cheeseburger Sliders Cookie Day
19 Cheesy Bosco Breadsticks	20 Mini Hot Dogs	21 Chicken Nuggets & Crackers	22 Rotini w/ meat sauce & Garlic Breadstick	23 Chicken Burger
26 Mac & Cheese	27 Chicken Taquitos	28 Orange Chicken w/ brown rice	29 French Toast Sticks & Chicken Sausage Patty Brunch for Lunch	30 Cheesy Pizza Cookie Day

DAILY ALTERNATE ENTREES
 Turkey & Cheese Sub Sandwich,
 Peanut Butter & Jelly Un crustable Snack Pack
 or *Entrée Salad Bar with Cheese & Crackers*

Lunch Includes
 Unlimited Daily Produce Bar
 100% Fruit Juice & Choice of 1% White or Non-Fat Chocolate Milk

= Vegetarian Option